



Advanced Technology. Simple Solutions.

NON-METERED LIGHTING KIOSK

ADPF

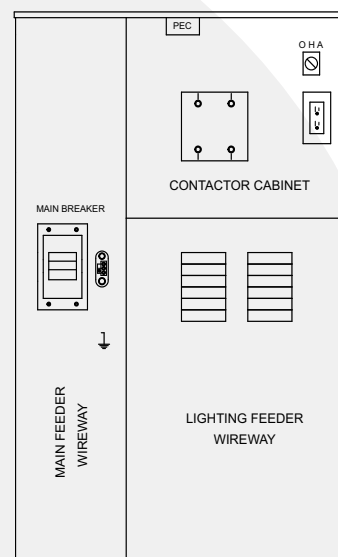
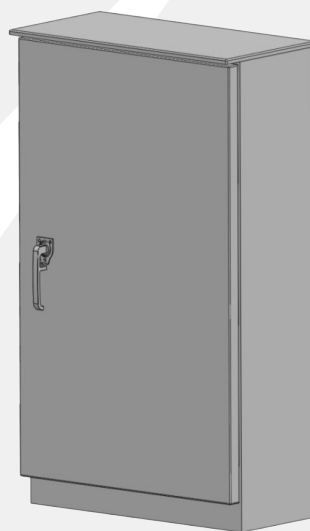
This enclosure is mainly used for street lighting and is available in both aluminum and carbon steel construction. The enclosure comes complete with service-entrance rated main breaker, distribution panel, photocell, HOA, lighting rated contactor and is sized to fit on a precast concrete base.

Features / Specifications

- Marine-grade Aluminum construction
- Service entrance rated main breaker - rated at 22kAIC
- Lighting contactor, control wiring and photo cell
- Convenience receptacle and HOA switch
- Powder coated ASA 61 Grey
- NEMA 3R rated
- Front door has a padlockable stainless steel 3-point latch mechanism and gas shock door stays
- Deadfront wireways (conduit extensions not required)
- Customer-specified breaker panel

Options

- Carbon steel construction
- Additional lighting contactors
- Flasher controls
- Stainless steel construction
- Sub breakers as required
- Meter base
- Heater and thermostat
- Cooling fan with controls
- Up to 22kAIC rated sub-breakers



PART NUMBER	HEIGHT	WIDTH	DEPTH	MAIN SERVICE	MAIN BREAKER AND CONTACTOR	PANEL CCTS
ADPF160	48 in	30 in	12 in	120/240V 60A 1PH	60A 2P	18
ADPF1100	48 in	30 in	12 in	120/240V 100A 1PH	100A 2P	18
ADPF1150	48 in	30 in	12 in	120/240V 150A 1PH	150A 2P	30
ADPF1200	60 in	30 in	12 in	120/240V 200A 1PH	200A 2P	30
ADPF360	48 in	30 in	12 in	120/208V 60A 3PH	60A 3P	18
ADPF3100	48 in	30 in	12 in	120/208V 100A 3PH	100A 3P	18
ADPD3200	60 in	30 in	12 in	120/208V 200A 3PH	200A 3P	30

For carbon steel construction add -C to the end of the part number.

Example: ADPF1100-C