



Advanced Technology. Simple Solutions.

HIGHWAY SERVICE PANEL

HWYSP12

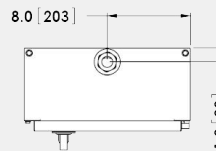
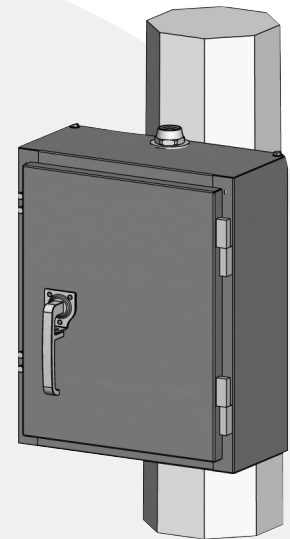
This family of HWYSP12 Highway Service Panels can be used on any steel pole for street lighting or power distribution and is fed from a supply authority underground or overhead service. The hinged door with padlockable handle enables easy access. A Type 3R rating and stainless steel construction offer additional protection.

Features / Specifications

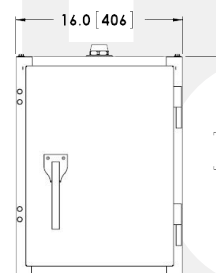
- 304 stainless steel construction
- Service entrance rated
- CSA Type 3R rated
- Overhead or underground service applications
- Hand-Off-Auto photocell bypass switch
- Lock-out tab on main breaker
- Mounting hardware and conduit fittings included
- 12 cct panel
- 120/240 VAC 1 phase
- 10 kAIC rated
- 100A main breaker (standard)
- Padlockable handle
- 1 1/4-in. conduit entry and 2-in. pole access hole on back
- Contactors and controls section for up to two 4-pole contactors or flashers
- Listed on BC MOT&I recognized products list

Options

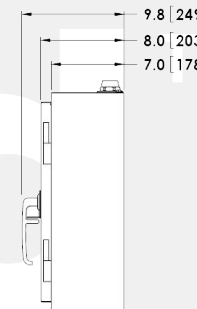
- 30 A and 100 A main breakers
- Snowplow debris cover
- Up to 2 lighting contactors
- Flasher controls
- Sub breakers as required up to 22 kAIC
- Additional contactors
- Crosswalk flasher
- Warning board flasher
- Up to 2 lighting contactors



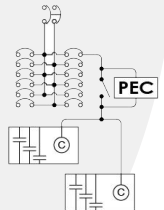
TOP VIEW



FRONT VIEW



SIDE VIEW



| PART NUMBER | HEIGHT | WIDTH | DEPTH | MAIN SERVICE | SERVICE | MAX # CONTACTORS |
|---------------|--------|-------|-------|-------------------|-------------|------------------|
| HWYSP12-3S | 24 in | 16 in | 8 in | 120/240V 30A 1PH | Overhead | 3 |
| HWYSP12-6S | 24 in | 16 in | 8 in | 120/240V 60A 1PH | Overhead | 3 |
| HWYSP12-10S* | 24 in | 16 in | 8 in | 120/240V 100A 1PH | Overhead | 3 |
| HWYSP12-3S-U | 24 in | 16 in | 8 in | 120/240V 30A 1PH | Underground | 3 |
| HWYSP12-6S-U | 24 in | 16 in | 8 in | 120/240V 60A 1PH | Underground | 3 |
| HWYSP12-10S-U | 24 in | 16 in | 8 in | 120/240V 100A 1PH | Underground | 3 |

* Standard design

Contact Valid for all available options.