

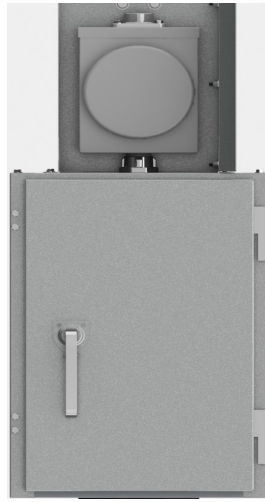
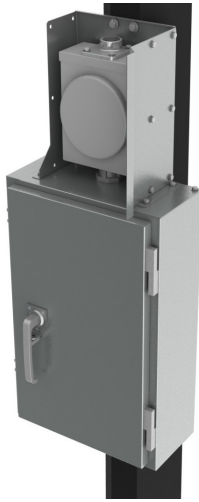


Advanced Technology. Simple Solutions.

METERED HIGHWAY PANEL

HWYSP12-10S-M

This metered service panel is specifically designed to meet the minimum panel height requirements for BC Highways and the maximum meter height by BC Hydro. It is fed by an overhead service and is used on steel poles. The hinged padlockable door enables easy secured access.

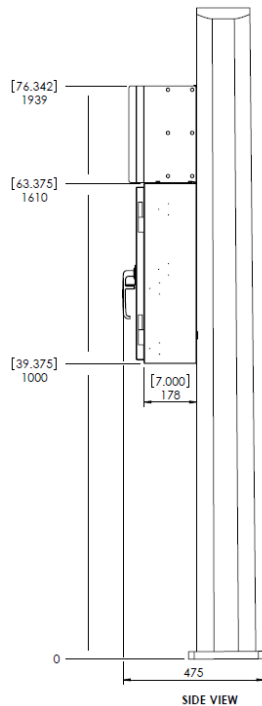
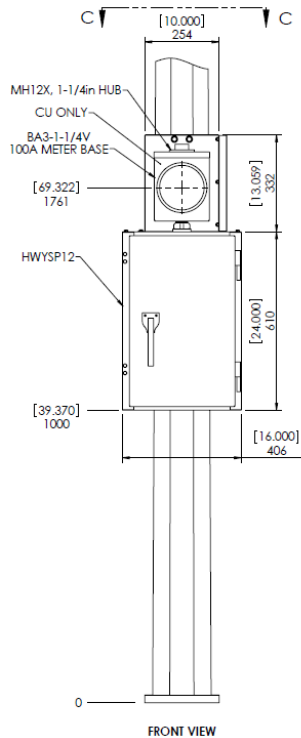


Features/Specifications

- 304 Stainless steel construction for service panel
- Dimensions of 37"H x 16"W x 7"D
- NEMA 3R rated
- Service entrance rated
- 12CCT QO series Square D panel
- Padlockable swing door
- Photocell OHA switch
- Lockout tab on main breaker
- 100A overhead feed CU only meter socket
- Reversible snowplow guard

Options

- Up to 2 lighting contactors
- Flasher module
- Meter guard
- Shorting bars and meter cover plate



PART NUMBER	MAIN SERVICE
HWYSP12-3S-M	120/240V 30A 1PH
HWYSP12-6S-M	120/240V 60A 1PH
HWYSP12-10S-M	120/240V 100A 1PH

Rev-1.1