

Nutrient Recovery System

Designed to enhance ecological sustainability, Valid's Nutrient Recovery System helps farmers manage their agricultural waste while reducing their environmental impact.

The system's efficient, eco-friendly processes facilitate compliance with government soil management regulations and decrease manure nutrient transportation costs.

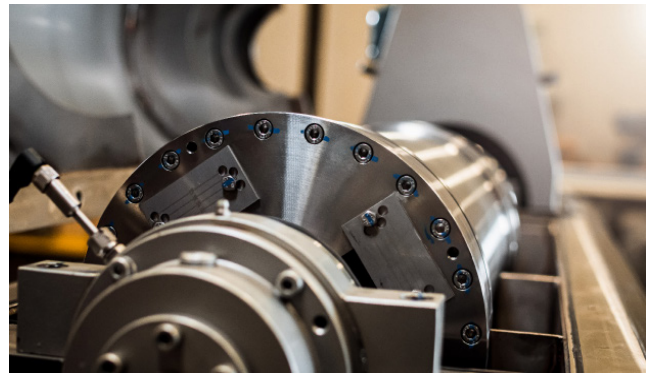


Advanced Technology. Simple Solutions.

1-888-632-6477 sales@validmfg.com validmfg.com

FEATURES

- Process extraction of NPK (nitrogen, phosphorus, potassium) nutrients from manure into a final product that is dry, stackable and easily transported
- Modular system configured to incorporate into each farm's existing operations
- System processing capacity 24/7, 365 days a year
- Solid-loading requirements from long-term storage drastically reduced

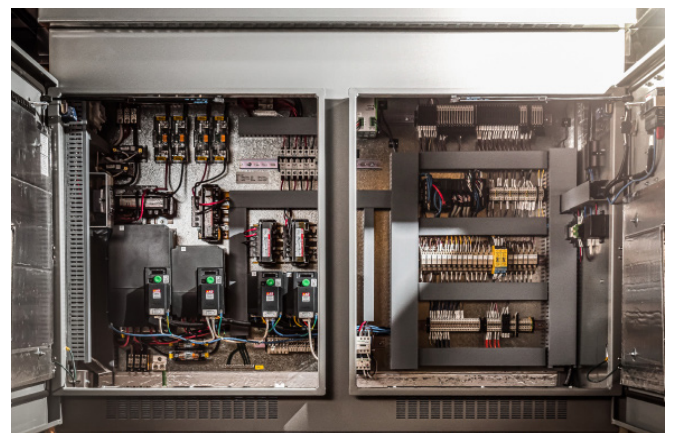


WHY VALID™?

- Valid's Nutrient Recovery System is designed for small to medium herds although it can be optimized and scaled for larger farms
- Highly efficient with fewer processing steps. Raw manure is fed directly into Valid's NRS, eliminating the need for pre-separation
- Eco-friendly processes help facilitate compliance with government soil management regulations and decrease manure nutrient transportation costs
- With Valid's Nutrient Recovery System farmers are able to reduce solids content going into long term storage to as low as 3 percent by volume
- Valid's Nutrient Recovery System is proven to be 50-60 percent more efficient at removing nutrients from manure than conventional separation systems

HIGHLIGHTS

- Designed, developed and manufactured in BC with support from the BC Dairy Association (DIREC) and the Investment Agriculture Foundation (IAF)
- Smaller footprint than existing market offerings means an affordable and customizable solution for your farm
- Optional 24-hour service contract available
- Remote monitoring and firmware updates
- Every system is backed by Valid's unparalleled after-sale customer service and technical support



SPECIFICATIONS

Weights and Dimensions:

Centrifuge Skid

- 13.2' long x 12.5' high (in run position) x 8.3' wide
- 7500 lbs (dry weight)

Pre-Process Skid

- 10.2' long x 10.5' high x 10.2' wide
- 8200 lbs (dry weight)

Minimum Required Footprint

- 210 sq ft

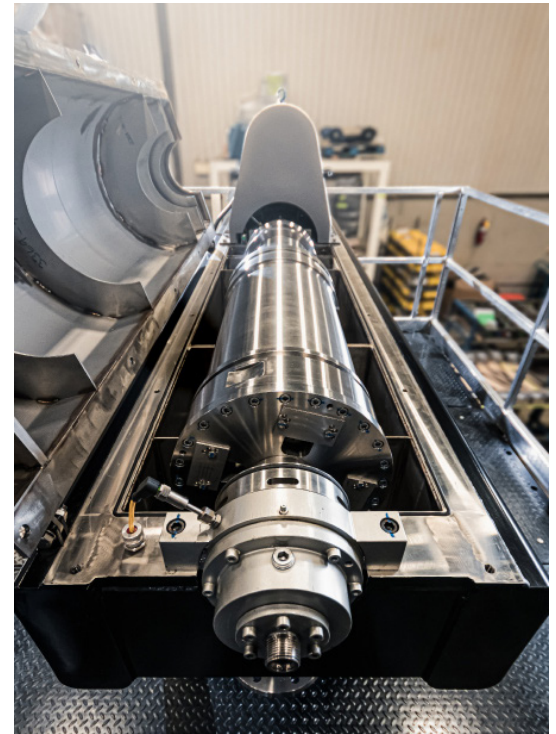
System Requirements:

- 1 x 10 hp 3-phase main drive motor (variable speed)
- 1 x 5 hp 3-phase back drive motor (variable speed)
- 1 x 3 hp 3-phase infeed pump motor (variable speed)
- 1 x 3 hp 3-phase primary processing motor (variable speed)
- 1 x 3 hp 3-phase mixer motor (variable speed)

Throughput Capacity:

- 30 – 50 litres / minute
(base model, larger units available)
- Main bowl typical operating speed: 3600–4300 RPM
- Differential speed: 2–50 RPM
- Maximum bowl speed: 5000 RPM
- Process liquid temperature: min 0°C, max 100 °C

Maximum percentage solid by volume: 40%
(Raw Infeed Material)





Advanced Technology. Simple Solutions.



“When you select Valid as a supplier, you get a partner that is **committed to your long-term success.**”

1-888-632-6477 sales@validmfg.com **validmfg.com**