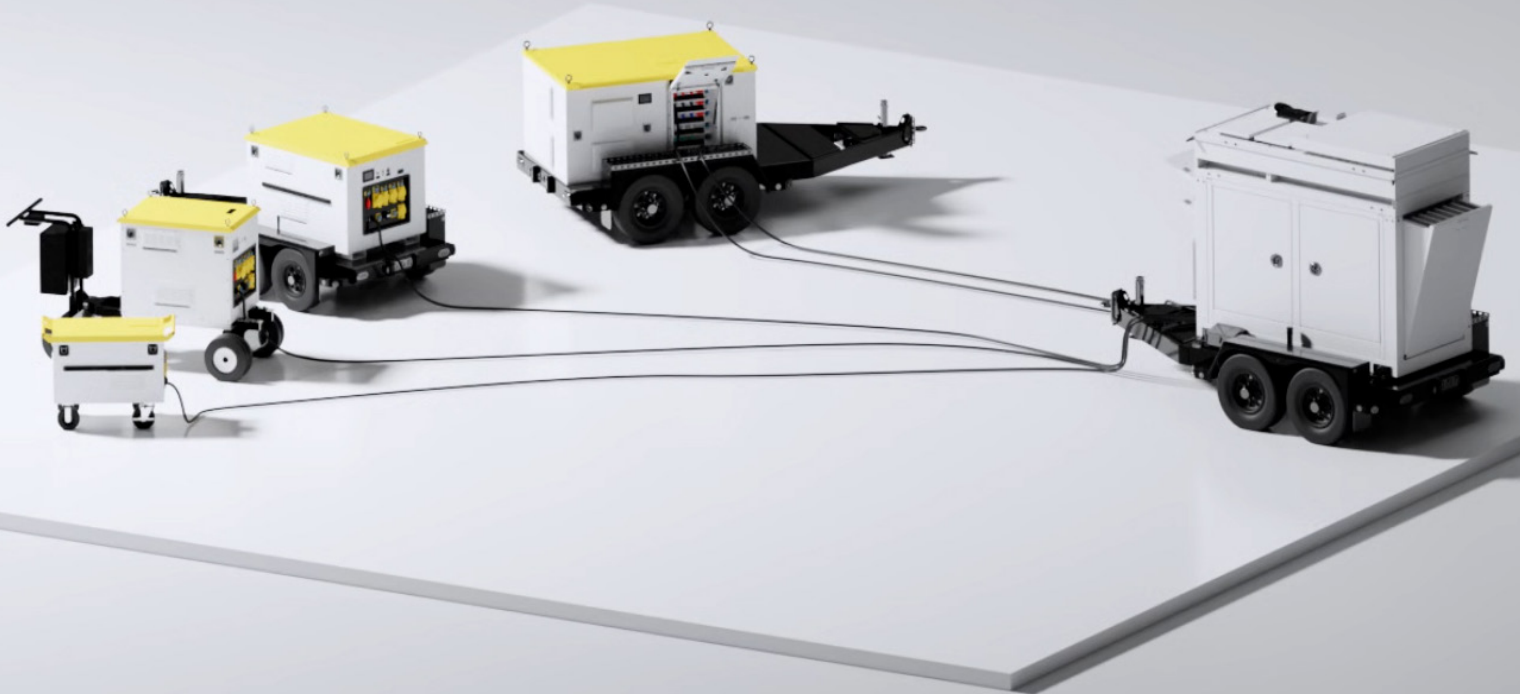


# Valid Power System

The Valid Power System (VPS) encompasses all of Valid's Power Generation and Distribution equipment.

VPS equipment is designed to create customizable power grids utilizing Valid's Studio Generators, Battery Packs and Distribution Units. The Valid Power System allows users to right size power equipment for varying requirements.



**Advanced Technology. Simple Solutions.**

1-888-632-6477   sales@validmfg.com   validmfg.com

## VPS BATTERY PACKS

### Decrease your carbon footprint without sacrificing performance

Valid's Battery Packs are changing the way equipment is powered. They offer easier ways to supply power in eco-sensitive areas while reducing the need for diesel generators and lengthy cable runs. Technicians simply need to estimate their power requirements for the day and select the appropriate size battery. Valid offers a number of different sizes of Battery Packs ranging from 10 to 100 kWh.

## FEATURES

- Quiet operation over a wide temperature range
- Weatherproof construction
- Software updates performed remotely
- User-friendly digital interface
- Auto generator start feature
- Remote Monitoring System with GPS tracking
- Multiple charge input and output selections

## HIGHLIGHTS

- Eliminates carbon emissions
- Guaranteed minimum 3000 charge cycles
- Operates in subzero climates down to -30°C (-22°F)
- Calculates and displays run times based on loads
- Software updates performed remotely
- 24/7 technical support
- Systems can be fully charged and discharged without concern of affecting battery life

**Design and features are subject to change**



[VPS 10-4 Specs](#)



[VPS 20-12 Specs](#)



[VPS 40-12 Specs](#)



[VPS 100-30 Specs](#)

Rev 2.3



## VPS STUDIO GENERATOR

**Increase efficiency while reducing energy waste and fuel costs**

The VPS Studio Generators are a durable and reliable portable power system.. Designed to optimize equipment's power and minimize environmental impact, the VPS Studio Generator boasts state-of-the-art features that protect the unit so it can operate efficiently.



[VPS800A-T4 Specs](#)



[VPS1200A-T4 Specs](#)



[VPS1400A-T4 Specs](#)

**Design and features subject to change**

Rev 2.3

## FEATURES

- Fuel efficient Tier-4 Cummins engine
- Passive roof cap
- Low battery voltage disconnect
- Remote monitoring
- Solar-powered battery charging
- Hydraulic free hatches
- Electronically controlled mechanical cooling fans

## HIGHLIGHTS

- Reduced emissions over Tier 3
- Lightweight, corrosion resistant, durable finish
- Reduced energy waste
- Location and real-time data tracking
- Easy-access servicing

**Advanced Technology. Simple Solutions.**

1-888-632-6477 sales@validmfg.com validmfg.com

# VPS HYBRID COMBOS

All the VPS Battery Packs operate as stand-alone units or utilize an Auto Start feature when paired with a VPS800A-T4 Studio Generator for charging.

The VPS100-30 lithium-ion battery pack is able to fully support loads up to 30kW. For higher load requirements or to recharge the battery, the system will start up the high-efficiency VPS800A-T4 Studio Generator for a max output of 130kW.



VPS Unit	Output	Amps per Leg
VPS100-30 Battery Pack Only	30 kW	83
VPS800A-T4 Studio Generator Only	100 kW	277
VPS Hybrid Combo Battery and Studio Generator	130 kW	360

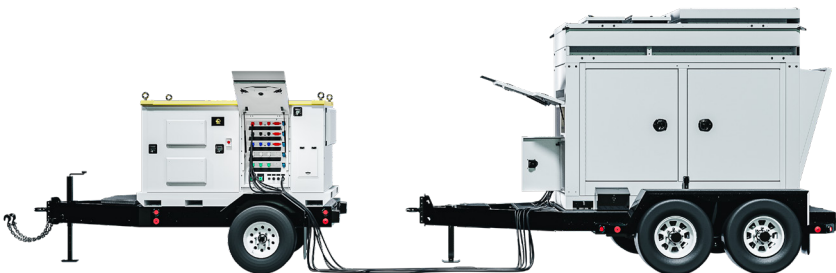
## FEATURES

- Sound-minimizing enclosures
- Reduced maintenance
- Intuitive touchscreen user interfaces
- Custom-designed output panels

## HIGHLIGHTS

- Reduced engine run time
- Reduced fuel consumption
- Reduction in emissions
- Seamless transitions between battery and generator
- Connections for simultaneous charging of multiple battery packs

## LAYOUT OPTIONS



Each unit separately mounted on individual trailers



Both units mounted on custom VPS Combo Trailer

Design and features subject to change

Rev 2.3





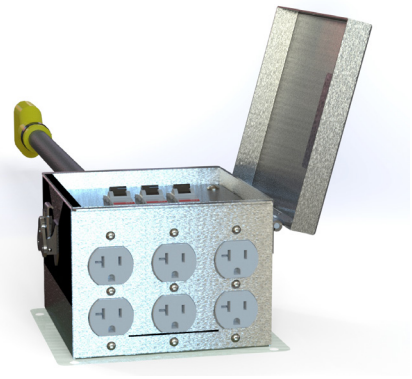
## VPS DISTRIBUTION

**Built durable enough for rigorous usage**

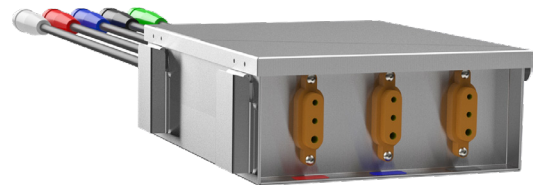
Valid is committed to developing the latest in weather-resistant, multi-plug options for managing power on set.

## HIGHLIGHTS

- Custom manufactured to specific requirements
- 3R-rated enclosures
- Stainless or aluminum enclosures
- Quality construction



[MDE - 3x20](#)



[MDE - 60Amp](#)



[MDE - Disconnect 175-400](#)



[MDE - SOCA](#)

Design and features subject to change

Rev 2.3

**Advanced Technology. Simple Solutions.**

1-888-632-6477 sales@validmfg.com validmfg.com