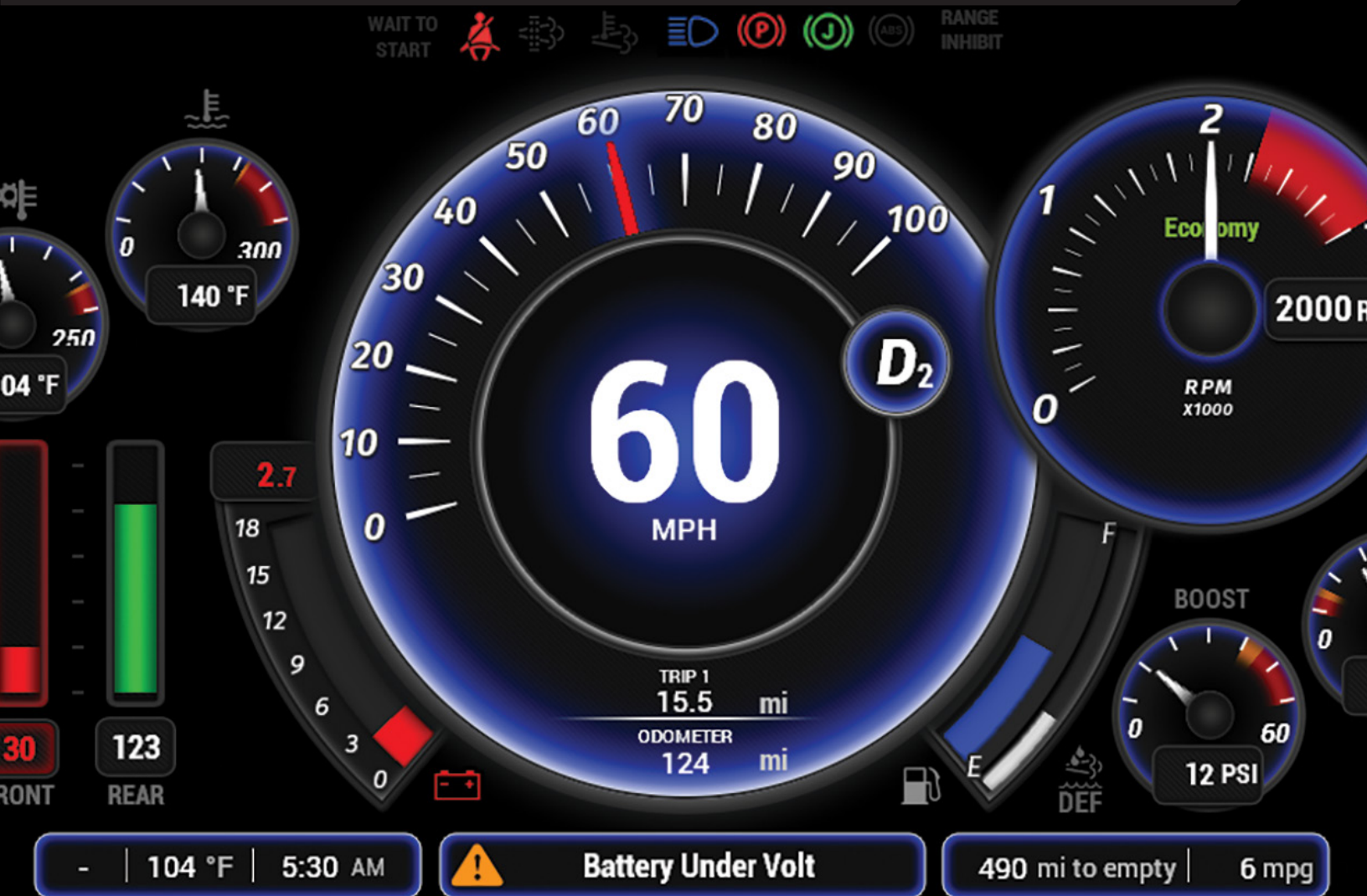


# Valid™ Instrument Cluster

The Valid™ Instrument Cluster is a digital graphics-based alternative to traditional instrument clusters.

Inspired by luxury automobile displays, the Valid Instrument Cluster is designed with a rich, intuitive interface featuring fully-customizable graphics and a wide range of information displays.

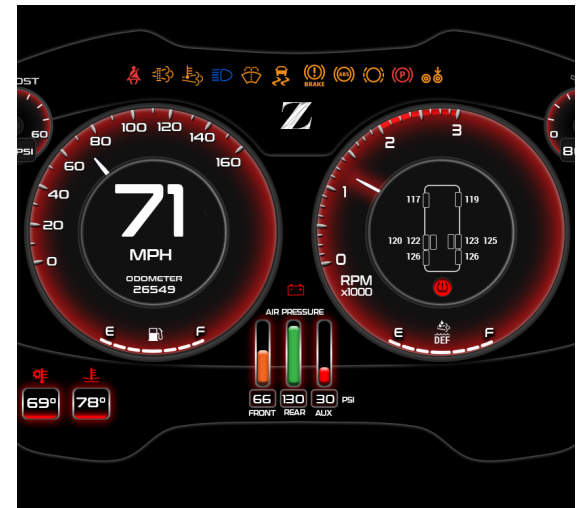


Advanced Technology. Simple Solutions.

1-888-632-6477 sales@validmfg.com validmfg.com

## ABSOLUTE CUSTOMIZATION

- Valid's Instrument Cluster is completely customizable to your requirements.
- Graphics are designed specifically with customer input to provide a truly unique product and branding.
- Available screen sizes include 12.1", 12.3" and 15" with other sizes available upon request.
- Multiple input options are available:
  - Rotary knob / joystick, touchscreen, steering wheel paddles and buttons.



Multiple input options include rotary knob/joystick (left), touchscreen, steering wheel paddles and buttons.

Customizable graphics also available for joystick buttons.

## DRIVER CUSTOMIZATION

- Driver-configurable selection of background images and accent colors.
- 15" display is adjustable vertically.
- Adjustable day / night brightness levels, with extra contrast available for nighttime driving.



## SEAMLESS INTEGRATION

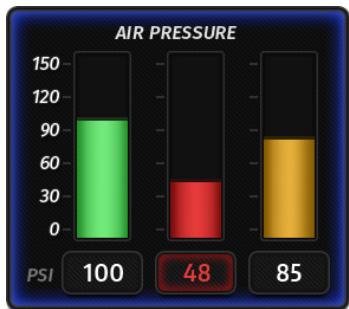
- Valid's Instrument Cluster unifies the display of information from both chassis and house systems into one visually-appealing interface.
- A large number of built-in I/O and connectivity options, as well as an integrated fuel sender interface, eliminates the need for additional modules, simplifying wiring in most cases.

“When you select Valid as a supplier, you get a partner that is **committed to your long-term success.**”



## GUARANTEED QUALITY

- A quad-core processor provides the power for the same type of graphics engine used in Tier 1 automotive applications.
- Wide operating temperature range.
- High native brightness display coupled with strengthened anti-reflective glass provides a durable, easy-to-read experience.
- Valid™ is well known in the industry for providing unparalleled products and service. Our commitment to our customers continues long past product delivery.



Choose how information is displayed – needles, bars, symbols, words, and more.



Pre-drive checklist lets you know when it's safe to drive. This display is completely configurable.



An integrated fuel sender interface helps simplify wiring.



Battery power level



Tire pressure

## INFORMATION DISPLAY

- Engine gauges / MIL
- Transmission
- Brake system
- Air system
- Tire pressure
- Suspension and leveling
- Fuel and trip information
- Diagnostics (OBD)
- Status of slide, step, entry or door status
- Battery voltages
- Generator / shore power status
- Camera video (IP)
- Additional options available. Please contact Valid for details.

**Advanced Technology. Simple Solutions.**

1-888-632-6477 sales@validmfg.com **validmfg.com**





## Advanced Technology. Simple Solutions.

### SPECIFICATIONS

- High brightness anti-reflective display available in 12.1" (4:3), 12.3" (8:3), or 15" (4:3)
- Quad-core graphics processor
- Dedicated I/O processor
- Dual CAN bus (J1939 250k / 500k and RV-C)
- EV drivetrain information
- Standard I/O connections: 15 digital + 4 analogue inputs and 3 digital outputs.
- Fuel-sender input (resistive)
- Ethernet, RS232
- Operating temperature range -30°C to +70°C
- Camera / infotainment integration (phone / media controls)
- Tire pressure monitoring interface
- On-board diagnostic decoded display
- Audio output via integrated speakers
- Other options available



The system comes ready to install, and can be configured as a 12.3" (8:3), 12.1" (4:3) or 15" (4:3) display.

### FUTURE CAPABILITIES

The Instrument Cluster supports connectivity to the internet to provide the potential for enhanced content (weather, traffic, etc.) as well as remote monitoring, support and diagnostics (router required).

Upcoming Features:

- Navigation information (arrival time, turn-by-turn, etc).
- Additional display sizes and resolutions including: 12.3" Wide HD (8:3), 15" Wide HD

