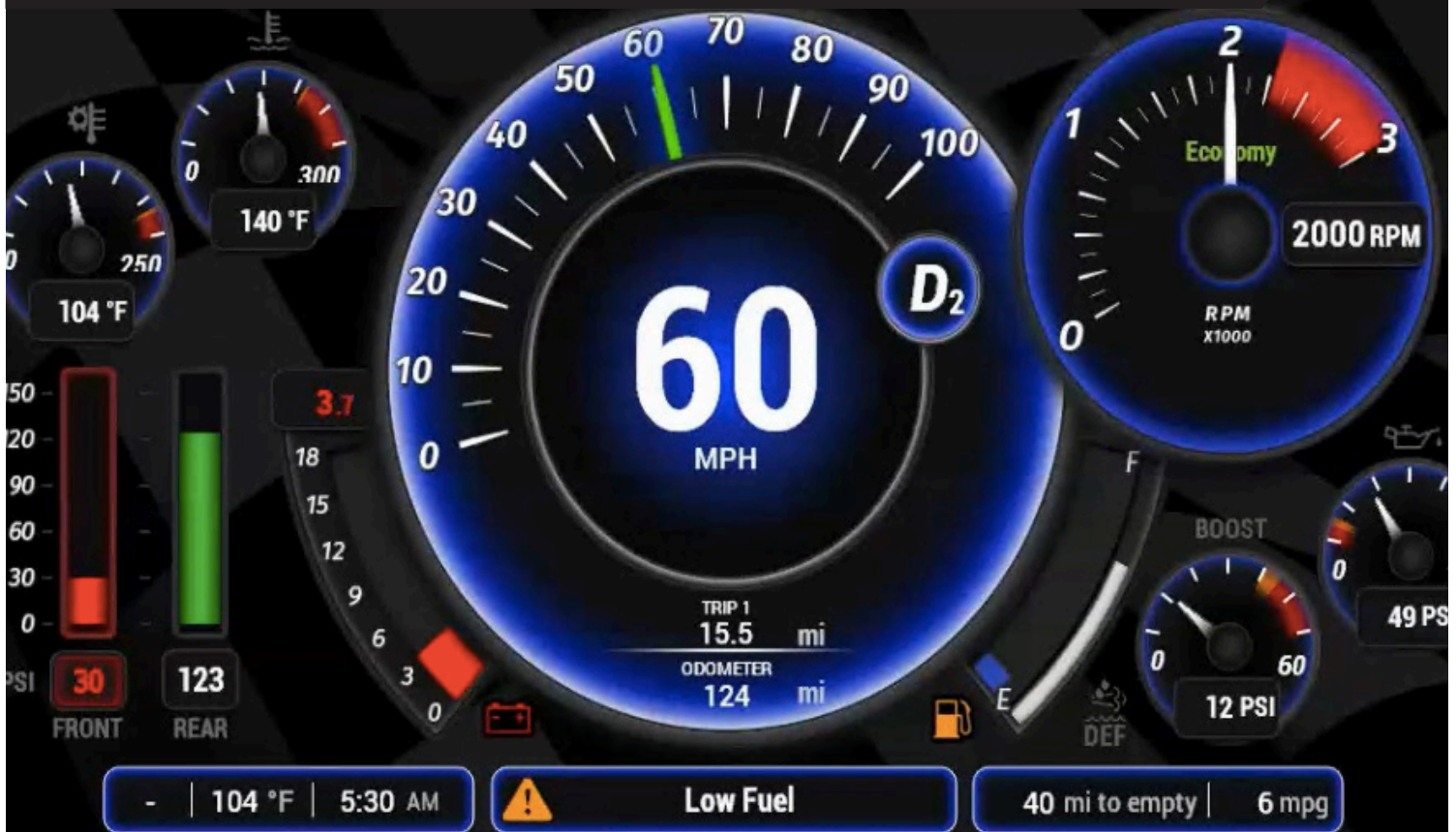


Instrument Cluster

Valid's Instrument Cluster is a digital graphics-based alternative to traditional instrument clusters. Inspired by the design of a luxury automobile's display systems, Valid's Instrument Cluster features a rich, intuitive interface, with graphics and information customized to suit your needs.

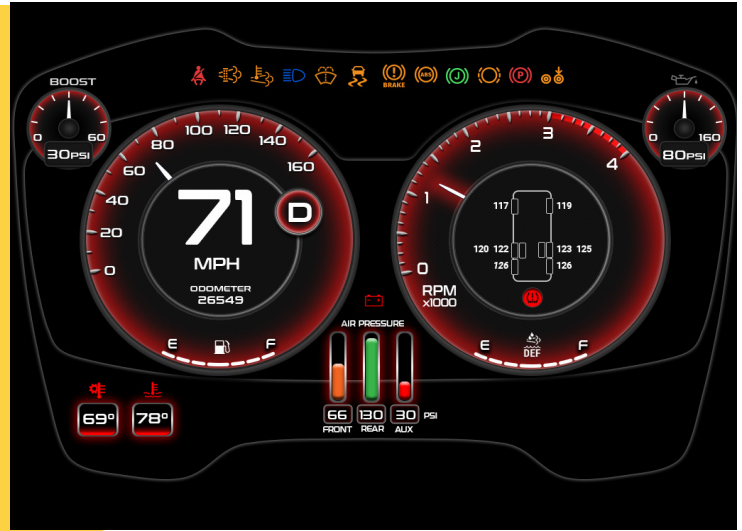


Advanced Technology. Simple Solutions.

1-888-632-6477 sales@validmfg.com validmfg.com

ABSOLUTE CUSTOMIZATION

- Valid's Instrument Cluster is completely customized to your requirements.
- Graphics are designed specifically with customer input to provide a truly unique product and branding.
- Available in 12.3" and 15," with other sizes also possible.
- Multiple input options are available:
 - rotary knob/joystick, touch screen, steering wheel paddles and buttons.



DRIVER CUSTOMIZATION

- Allow the driver to choose from a selection of background images and accent colours.
- The vertical position of the 15" display is adjustable.
- Brightness can be adjusted separately for day and night with a contrast enhancement for night mode. engine used in Tier 1 automotive applications.



Multiple input options include rotary knob/joystick (above), touch screen, steering wheel paddles and buttons.



ABSOLUTE INTEGRATION

- Valid's Instrument Cluster unifies the display of information from both chassis and house systems into one visually appealing interface.
- A large number of built-in I/O and connectivity options as well as an integrated fuel sender interface eliminates the need for additional modules simplifying wiring in most cases.

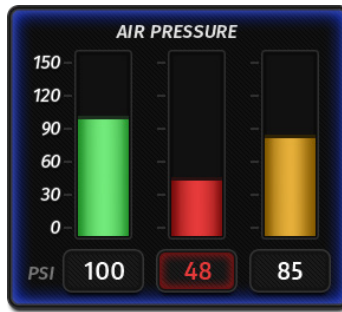


1-888-632-6477 sales@validmfg.com validmfg.com

INFORMATION DISPLAY

- Engine gauges/MIL
- Transmission
- Brake system
- Air system
- Tire pressure
- Suspension and leveling
- Fuel and trip information
- Diagnostics (OBD)
- Status of slide, step, door, etc.
- Battery voltages
- Generator/shore power status
- Camera video (IP)

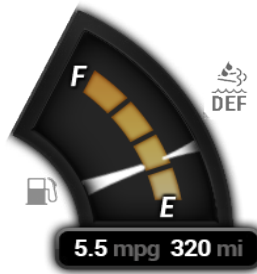
This is not an exhaustive list!
Ask about additional options.



Choose how information is displayed –
needles, bars, symbols, words, or more.



Pre-drive checklist lets you know when it's safe to
drive. This display is completely configurable.



An integrated fuel sender interface
helps simplify wiring.



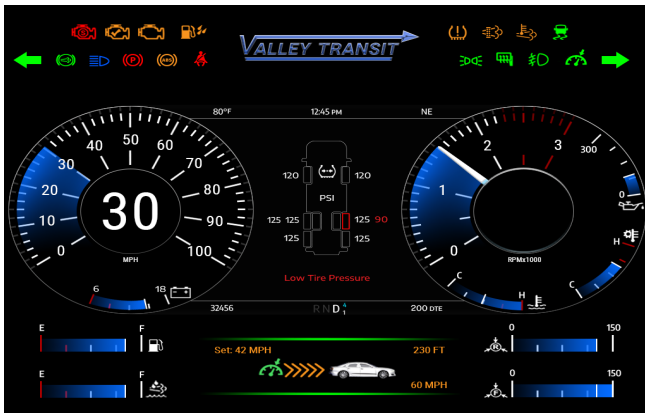
Battery power level.



Tire pressure.

ABSOLUTE QUALITY

- A quad-core processor provides the power for the same type of graphics engine used in Tier 1 automotive applications.
- Wide operating temperature range.
- High native brightness display coupled with strengthened anti-reflective glass provides a durable, easy-to-read experience.
- Valid is well known in the industry for providing top-notch products and service. Our commitment to our customers continues long past product delivery.



**“When you select Valid as a supplier, you get a partner
that is committed to your long-term success.”**



1-888-632-6477 sales@validmfg.com validmfg.com

SPECIFICATIONS

- High brightness anti-reflective display available in 12.1" (16:10), 12.3" (8:3) or 15" (4:3)
- Quad core graphics processor
- Dedicated I/O processor
- Dual CANbus (J1939 250k/500k and RV-C)
- Optional J1708 interface
- 3 digital outputs, 15 digital inputs, 4 analog inputs standard
- Fuel sender input (resistive)
- Ethernet, RS232
- Operating temperature -30°C to +70°C
- IP/digital camera display (analog supported via external encoder)
- Tire pressure monitoring interface (Pressure Pro J1939)
- On-board diagnostic decoded display
- Audio output via integrated speakers and warning buzzer
- Optional: expansion board (extra I/O, CANbus, other), J1708 interface, USB, WiFi and/or Bluetooth



The Valid Display System comes ready to install, and can be configured as a 12.1" (16:10), 12.3" (8:3), or 15" (4:3) display.

FUTURE FEATURES

The Instrument Cluster supports connectivity to the internet to provide the potential for enhanced content (weather, traffic, etc.) as well as remote monitoring, support and diagnostics (router required).

Upcoming Features:

- Navigation information (arrival time, turn-by-turn, etc)
- Media info/control
- Phone info/control



1-888-632-6477 sales@validmfg.com validmfg.com