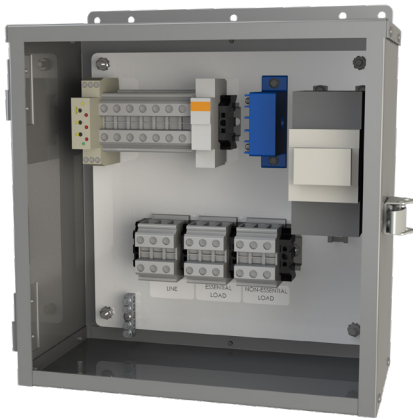




# ENERGY MANAGEMENT SYSTEM

## EMS

Electric vehicle supply equipment can draw a substantial load when in the charging mode. For existing buildings, the addition of EVSE can result in the total load exceeding the existing service capacity. To eliminate the need to upgrading the service an EMS can be installed to share the load. The combination of Rule 8-500 and new Subrules 8-106(11) and (12) in the 2018 CEC allows the use of EMS to share the loads.



Shown with cover removed

### Features/Specifications

- Galvanized steel construction
- Dimensions of 12”H x 12”W x 6”D
- CSA Type 3R rated
- Timer, 5min on-delay (adjustable from 0.1sec to 120hrs)
- AC current switch (adjustable from 1A to 175A)
- 60A 2P contactor (resistive)
- Terminal blocks for Line, Essential Load and Non-Essential Load
- Powder coated PC101 Grey

| PART NUMBER | DESCRIPTION      | DIMENSIONS |     |    |
|-------------|------------------|------------|-----|----|
|             |                  | H          | W   | D  |
| EMS60       | 60A SINGLE PHASE | 12"        | 12" | 6" |

