



Advanced Technology. Simple Solutions.

HIGHWAY SERVICE DISCONNECT

HWYSD

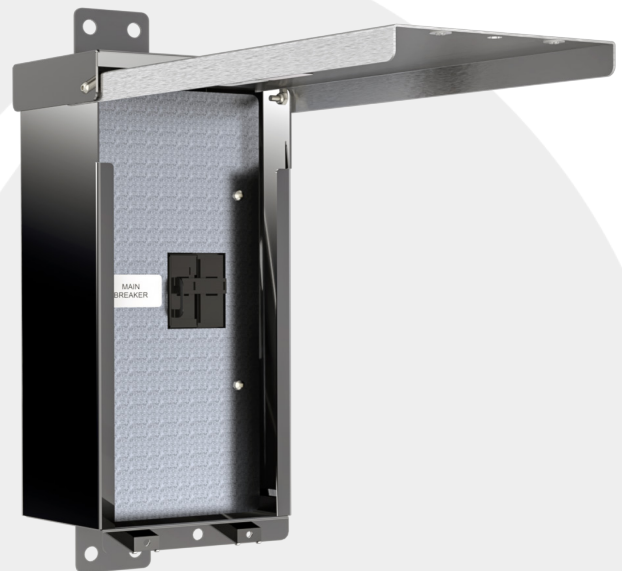
This family of Highway Service Disconnect Panels can be installed on any steel pole. Its primary function is a main disconnect for street lighting or power distribution and is useful when the service panel cannot be placed on the same pole as the supply. The padlockable flip-up cover enables easy access. A Type 3R rating and stainless steel construction offer additional protection.

Features / Specifications

- 304 stainless steel construction
- Service entrance rated
- CSA Type 3R rated
- Overhead service only
- Lock-out tab on main breaker
- Flip-up padlockable cover
- Mounting hardware and conduit fittings included
- Bondable neutral block
- Pole bracket designed for bolt or band-on installation
- 120/240 VAC 1 phase
- 22kAIC rated
- Listed on BC MOT&I recognized products list
- 30A to 100A main breaker

Options

- Aluminum construction
- 10kAIC rated breakers



PART NUMBER	HEIGHT	WIDTH	DEPTH	MAIN DISCONNECT
HWYSD100-3S	15 in	6.75 in	5 in	120/240V 30A 1PH
HWYSD100-6S	15 in	6.75 in	5 in	120/240V 60A 1PH
HWYSD100-10S	15 in	6.75 in	5 in	120/240V 100A 1PH

Contact Valid for all available options.

