



Advanced Technology. Simple Solutions.

3 PHASE HIGHWAY SERVICE PANEL

HWYSP24

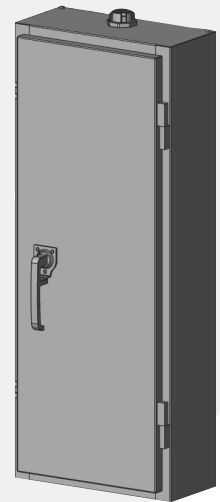
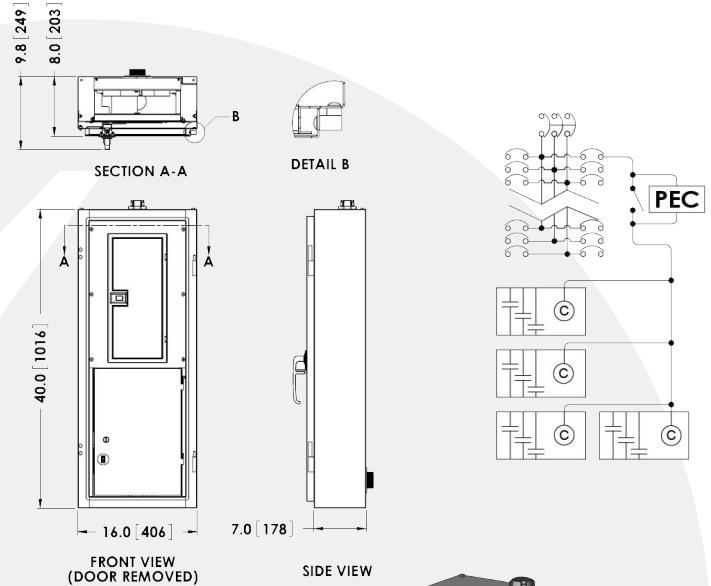
This family of HWYSP24 Highway Service Panels can be used on any steel pole for street lighting or power distribution and are fed from a supply authority underground or overhead service. The hinged door with padlockable handle enables easy access. A Type 3R rating and stainless steel construction offer additional protection.

Features / Specifications

- 304 stainless steel construction
- Service entrance rated
- CSA Type 3R rated
- Overhead or underground service applications
- Photocell bypass switch
- Lock-out tab on main breaker
- Mounting hardware and conduit fittings included
- 24 cct panel
- 120/208 or 347/600 VAC 3-phase
- 10 kAIC rated
- 30A - 100A main breaker
- Padlockable handle
- 1 1/4-in. conduit entry and 2-in. pole access hole on back
- Contactors and controls section for up to four 4-pole contactors or flashers
- Listed on BC MOT&I recognized products list

Options

- 30A and 60A main breakers
- Snowplow debris cover
- Up to 4 lighting contactors
- Flasher controls
- Sub-breakers as required up to 22 kAIC
- Additional contactors
- Crosswalk flasher
- Warning board flasher



PART NUMBER	HEIGHT	WIDTH	DEPTH	MAIN SERVICE	SERVICE	MAX # CONTACTOR
HWYSP24-3-100-3S	40 in	16 in	8 in	120/208V 30A 3PH	OVERHEAD	4
HWYSP24-3-100-6S	40 in	16 in	8 in	120/208V 60A 3PH	OVERHEAD	4
HWYSP24-3-100-10S	40 in	16 in	8 in	120/208V 100A 3PH	OVERHEAD	4
HWYSP24-600-125-3S	48 in	20 in	9 in	347/600V 30A 3PH	OVERHEAD	5
HWYSP24-600-125-6S	48 in	20 in	9 in	347/600V 60A 3PH	OVERHEAD	5
HWYSP24-600-125-10S	48 in	20 in	9 in	347/600V 100A 3PH	OVERHEAD	5
HWYSP24-3-100-3S-U	40 in	16 in	8 in	120/208V 30A 3PH	UNDERGROUND	4
HWYSP24-3-100-6S-U	40 in	16 in	8 in	120/208V 60A 3PH	UNDERGROUND	4
HWYSP24-3-100-10S-U	40 in	16 in	8 in	120/208V 100A 3PH	UNDERGROUND	4
HWYSP24-600-125-3S-U	48 in	20 in	9 in	347/600V 30A 3PH	UNDERGROUND	5
HWYSP24-600-125-6S-U	48 in	20 in	9 in	347/600V 60A 3PH	UNDERGROUND	5
HWYSP24-600-125-10S-U	48 in	20 in	9 in	347/600V 100A 3PH	UNDERGROUND	5

Contact Valid for all available options.