



Advanced Technology. Simple Solutions.

INSULATORS

INS

Features / Specifications

- Available from 600V - 15000V
- Arc-resistant
- Threaded inserts on both sides
- Red in colour



INS-600



INS-600A



INS-600B



INS-600C



INS-2500



INS-2500A



INS-5000



INS-5000A



INS-7500



INS-15000



INS-15000A

PART NUMBER	INDOOR VOLTAGE	SHAPE	DIAMETER	HEIGHT	INSERT SIZE
INS-600	600 V	HEXAGON	1-3/4 in	1-3/8 in	3/8-16 x 3/8
INS-600A	600 V	ROUND	1-3/4 in	1-3/8 in	3/8-16 x 3/8
INS-600B	600 V	HEXAGON	1-1/8 in	1 in	1/4-20 x 5/16
INS-600C	600 V	HEXAGON	1-1/8 in	1-1/4 in	1/4-20 x 5/16
INS-2500	2500 V	OCTAGON	2 in	2 in	3/8-16 x 9/16
INS-2500A	2500 V	ROUND	2-1/2 in	2-1/8 in	3/8-16 x 9/16
INS-5000	5000 V	ROUND	3-3/4 in	3-1/2 in	(2) 3/8-16 x 5/8
INS-5000A	5000 V	ROUND	3-3/4 in	3-1/2 in	(4) 3/8-16 x 5/8
INS-7500	7500 V	ROUND	2-3/4 in	5 in	3/8-16 x 5/8
INS-15000	15000 V	ROUND	3-3/4 in	6 in	(2) 3/8-16 x 5/8
INS-15000A	15000 V	ROUND	3-3/4 in	6 in	(4) 3/8-16 x 5/8

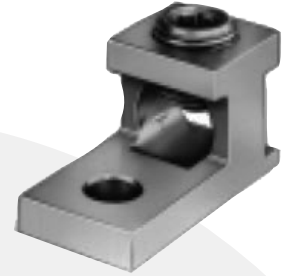


Advanced Technology. Simple Solutions.

SINGLE AND DOUBLE LUGS

Single Lugs

PART NUMBER	WIRE SIZE
VSL-2	#14 - 2
VSL-1/0	#14 - 1/0
VSL-2/0	#6 - 2/0
VSL-250	#6 - 250 MCM
VSL-300	#6 - 300 MCM
VSL-350	#6 - 350 MCM
VSL-600	#2 - 600 MCM
VSL-800	300 MCM - 800 MCM



Single Lug Design

Double Lugs

PART NUMBER	WIRE SIZE
VDL-250	(2) #6 - 250 MCM
VDL-350	(2) #6 - 350 MCM
VDL-600	(2) #2 - 600 MCM
VDL-800	(2) 300 MCM - 800 MCM
VDL-1000	(2) 350 MCM - 1000 MCM



Double Lug Design