



Advanced Technology. Simple Solutions.

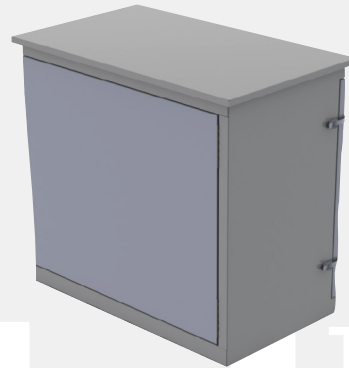
JOINT USE UTILITY PEDESTAL

JUB

This joint use utility pedestal is designed to be used in the supply of multi-family dwellings and comes complete with a service entrance rated main disconnect. It is designed to fit directly on a precast base and provides multiple load terminals with underground feed. The rear section is used for telephone or cable terminations.

Features / Specifications

- CSA Type 3R rated
- Enclosure made from 14 ga. Galvanized Steel
- Dimensions of 36 in. H x 38 in. W x 22 in. D
- Powder coat PC101 Grey
- Designed to fit Armtec #4-0045 precast base
- Hinged main breaker cover
- Service entrance barrier with sealing screws
- Plywood backpan on TEL/CATV side
- Padlockable hasp on outer doors
- Double 250MCM - #6 termination lugs on incoming and secondary
- Double 250MCM - #6 ground lug



Options

- PC136 Carbon Black powder coat: (Add '-PC136' to P/N)
- Anti-graffiti coating
- Barrier to separate telephone and cable sections
- 3-phase models for 208V, 480V, and 600V (Enclosure size may need to increase)

Product Selection Guide Part Number:

| 1. PRODUCT | | 2. MAIN BREAKER % RATING | | 3. # OF INCOMING TERMINATIONS | | 4. AMPACITY | | 5. # OF SECONDARY TERMINATIONS | |
|----------------------------|----------------------------|--------------------------|---|-------------------------------|-------------|-------------|------|--------------------------------|-------------|
| JUB | JOINT USE UTILITY PEDESTAL | 1 | 100% RATED MAIN BREAKER | 2 | 250MCM - #6 | 200 | 200A | 4 | 250MCM - #6 |
| | | 1L | 100% RATED MAIN BREAKER W/ LOCK-OUT TAB | 4 | 250MCM - #6 | 250 | 250A | 6 | 250MCM - #6 |
| | | 8 | 80% RATED MAIN BREAKER | - | - | 300 | 300A | 8 | 250MCM - #6 |
| | | 8L | 80% RATED MAIN BREAKER W/ LOCK-OUT TAB | - | - | 350 | 350A | 10 | 250MCM - #6 |
| | | - | - | - | - | 400 | 400A | - | - |
| SAMPLE PART NUMBER: | | | | | | | | | |
| JUB | | 1 | | 4 | | 250 | | 8 | |