



Advanced Technology. Simple Solutions.

## MDE - 3X20

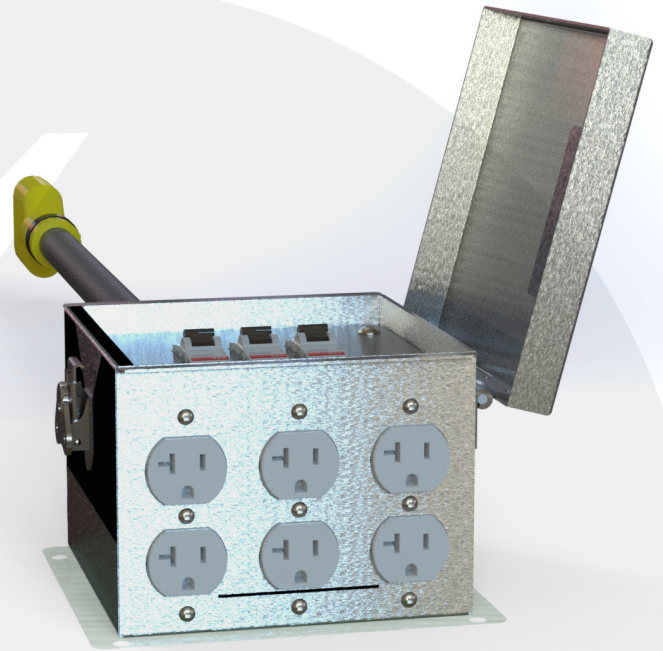
Valid's high-quality distribution units are built for the rigor of the film and entertainment industry. Valid offers a variety of connectors based on local requirements across North America, all housed in a durable, versatile enclosure that is Type 1R rated.

### Features / Specifications

- Marine-grade aluminum construction
- CSA Type 1R rated
- Hinged door with pour-in-place gasket
- Colour-coded connectors for temporary connections
- Logo etching

### Options

- Carbon or stainless steel construction
- Over-current protection
- Custom sizes, materials, and colours
- GFCI



MDE 3x20

PART NUMBER	HEIGHT	WIDTH	DEPTH	MAIN BREAKER AMPERAGE
MDE - 3x20	6 in	6 in	4.5 in	20 amp

Contact Valid for all available options.