



Advanced Technology. Simple Solutions.

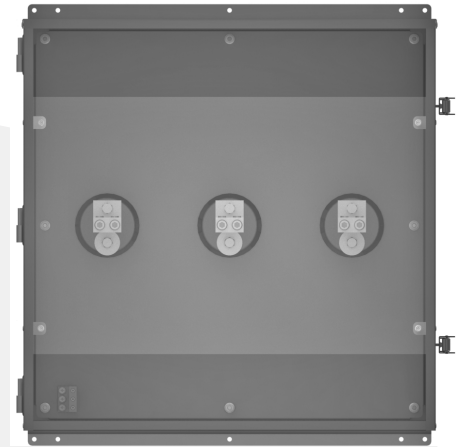
WEATHERPROOF MEDIUM-VOLTAGE JUNCTION BOX MVJB

Features / Specifications

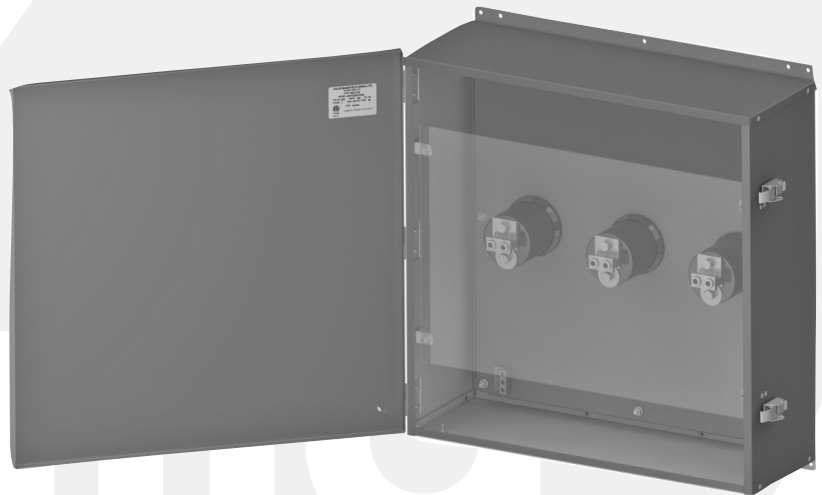
- Galvanized steel construction
- CSA Type 3R rated
- Top and bottom wall-mount ears
- Hinged door with pour-in-place gasket
- Protective polycarbonate inner cover
- 5KV (4160V) rated
- 3-pole design
- Ground lug
- Padlock hasps on door
- PC101 (ANSI 61) Grey powder coat finish

Options

- CSA Type 1, 4, and 4X
- Multiple termination lug configurations
- Servit post
- Drain vent
- Cabinet size and material
- Custom powder coat colours



Front View
(Door Hidden, Shown with
Polycarbonate Cover)



Isometric View
(Shown with
Polycarbonate Cover)

PART NUMBER	VOLTAGE	AMPS	HEIGHT	WIDTH	DEPTH
MVJB-125	5000	125	24 in	24 in	8 in
MVJB-250	5000	250	24 in	24 in	8 in
MVJB-300	5000	300	24 in	24 in	8 in
MVJB-400	5000	400	36 in	30 in	10 in
MVJB-600	5000	600	36 in	30 in	10 in
MVJB-800	5000	800	36 in	36 in	12 in
MVJB-1000	5000	1000	40 in	30 in	14 in