

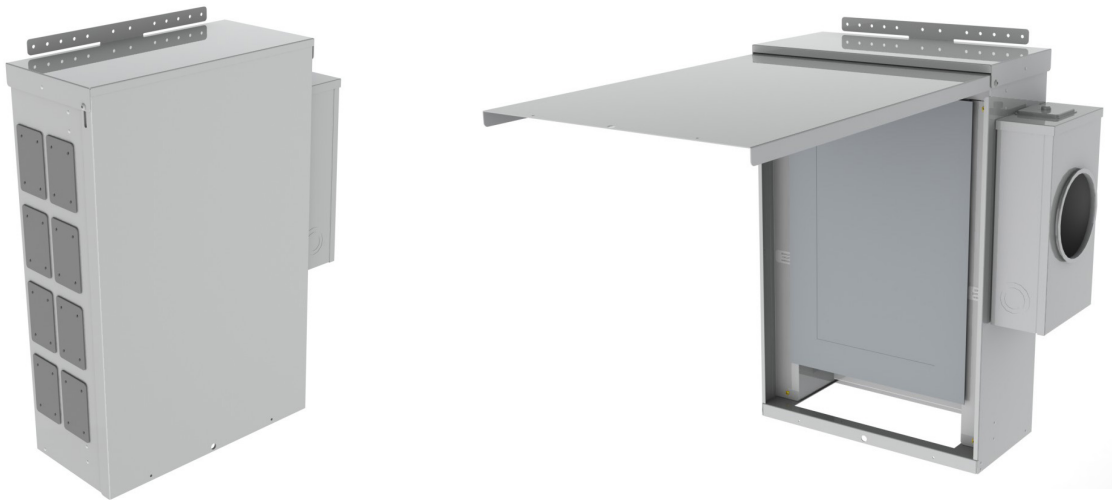


Advanced Technology. Simple Solutions.

TEMPORARY POWER PANEL - METERED

PWC-07-M

This metered wall, pole or plywood mounted power panel is the solution for temporary power requirements. The integrated meter socket, breaker panel and weatherproof receptacles are a complete certified package. This panel can service up to 8 individual loads as well as any additional loads that can be added through the open bottom. There are multiple receptacle configurations to enable the panel to fit any required applications. The padlockable flip lid provides security for energized devices.



Features/Specifications

- Galvanized steel construction
- External mounting ears for pole, wall or plywood mounting
- Padlockable flip lid
- Up to 8 receptacles with weatherproof covers
- 100A integrated meter socket
- Up to 100A main breaker
- Open bottom for additional loads
- All wiring is enclosed in dedicated wireways
- Universal receptacle openings
- Breakers and receptacles can be field installed or supplied completely assembled
- Powder coated PC 101 Grey

Optional Receptacles Complete With Weatherproof Covers

- 15A Duplex GFI
- 20A Duplex GFI
- 15A Duplex
- 20A Duplex
- 15A TL 125V
- 20A TL 125V
- 30A Crowfoot 125V
- 30A TL 125V
- 30A 125/250V
- 50A 125/250V
- 50A TL 125/250V

PART NUMBER	HEIGHT	WIDTH	DEPTH	MAIN SERVICE	MAIN BREAKER	PANEL CCTS
PWC-07-M-60	30"	19.25"	9"	120/240V 1PH	60A 2P	16
PWC-07-M-100	30"	19.25"	9"	120/240V 1PH	100A 2P	16

Rev-1.1