

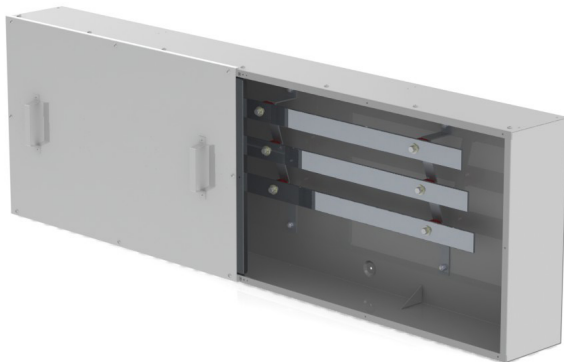


Advanced Technology. Simple Solutions.

CONTINUOUS BUS SPLITTER TROUGH (3 BAR)

VBG1-3B

The VSBG1 continuous bus splitter trough is used for indoor applications for power distribution. The bus bars are tin plated aluminum and mounted on offset steps to enable simple cable termination. Hand holds on the screw on style lid and bent edges allow easy field installation. The enclosures are manufactured with galvanized steel for additional corrosion protection and are finished with PC101 (ANSI 61) grey powder coat paint.



PART NUMBER	AMPS	HEIGHT (INCHES)	WIDTH (INCHES)	DEPTH (INCHES)
VBG1-3B-400-36	400	22	36	8
VBG1-3B-400-48	400	22	48	8
VBG1-3B-400-72	400	22	72	8
VBG1-3B-400-96	400	22	96	8
VBG1-3B-400-120	400	22	120	8
VBG1-3B-600-36	600	22	36	8
VBG1-3B-600-48	600	22	48	8
VBG1-3B-600-72	600	22	72	8
VBG1-3B-600-96	600	22	96	8
VBG1-3B-600-120	600	22	120	8
VBG1-3B-800-48	800	28	48	9
VBG1-3B-800-72	800	28	72	9
VBG1-3B-800-96	800	28	96	9
VBG1-3B-800-120	800	28	120	9
VBG1-3B-800-144	800	28	144	9
VBG1-3B-1000-72	1000	28	72	9
VBG1-3B-1000-96	1000	28	96	9
VBG1-3B-1000-120	1000	28	120	9
VBG1-3B-1000-144	1000	28	144	9
VBG1-3B-1200-72	1200	28	72	9
VBG1-3B-1200-96	1200	28	96	9
VBG1-3B-1200-120	1200	28	120	9
VBG1-3B-1200-144	1200	28	144	9
VBG1-3B-1600-72	1600	34	72	12
VBG1-3B-1600-96	1600	34	96	12
VBG1-3B-1600-120	1600	34	120	12
VBG1-3B-1600-144	1600	34	144	12
VBG1-3B-2000-144	2000	34	144	12
VBG1-3B-2500-144	2500	34	144	12

Features/Specifications

- Galvanized steel construction
- CSA Type 1 rated
- 600V, 3 bar
- Raised rear mounting holes
- Screw on covers with hand holds
- 800A and above minimum 50KA bus bracing
- PC101 (ANSI 61) Grey powder coat finish
- Type 3R and 4 available (consult factory)
- Line and load lugs available
- Custom sizes, material and colour available

Rev-1