

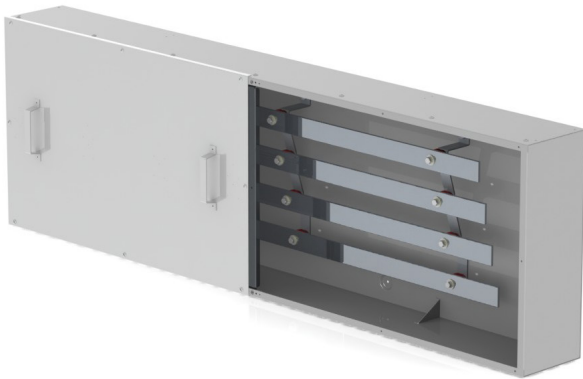


Advanced Technology. Simple Solutions.

CONTINUOUS BUS SPLITTER TROUGH (4 BAR)

VBG1-4B

The VSBG1 continuous bus splitter trough is used for indoor applications for power distribution. The bus bars are tin plated aluminum and mounted on offset steps to enable simple cable termination. Hand holds on the screw on style lid and bent edges allow easy field installation. The enclosures are manufactured with galvanized steel for additional corrosion protection and are finished with PC101 (ANSI 61) grey powder coat paint.



| PART NUMBER | AMPS | HEIGHT (INCHES) | WIDTH (INCHES) | DEPTH (INCHES) |
|------------------|------|-----------------|----------------|----------------|
| VBG1-4B-400-36 | 400 | 22 | 36 | 8 |
| VBG1-4B-400-48 | 400 | 22 | 48 | 8 |
| VBG1-4B-400-72 | 400 | 22 | 72 | 8 |
| VBG1-4B-400-96 | 400 | 22 | 96 | 8 |
| VBG1-4B-400-120 | 400 | 22 | 120 | 8 |
| VBG1-4B-600-36 | 600 | 22 | 36 | 8 |
| VBG1-4B-600-48 | 600 | 22 | 48 | 8 |
| VBG1-4B-600-72 | 600 | 22 | 72 | 8 |
| VBG1-4B-600-96 | 600 | 22 | 96 | 8 |
| VBG1-4B-600-120 | 600 | 22 | 120 | 8 |
| VBG1-4B-800-48 | 800 | 28 | 48 | 9 |
| VBG1-4B-800-72 | 800 | 28 | 72 | 9 |
| VBG1-4B-800-96 | 800 | 28 | 96 | 9 |
| VBG1-4B-800-120 | 800 | 28 | 120 | 9 |
| VBG1-4B-800-144 | 800 | 28 | 144 | 9 |
| VBG1-4B-1000-72 | 1000 | 28 | 72 | 9 |
| VBG1-4B-1000-96 | 1000 | 28 | 96 | 9 |
| VBG1-4B-1000-120 | 1000 | 28 | 120 | 9 |
| VBG1-4B-1000-144 | 1000 | 28 | 144 | 9 |
| VBG1-4B-1200-72 | 1200 | 28 | 72 | 9 |
| VBG1-4B-1200-96 | 1200 | 28 | 96 | 9 |
| VBG1-4B-1200-120 | 1200 | 28 | 120 | 9 |
| VBG1-4B-1200-144 | 1200 | 28 | 144 | 9 |
| VBG1-4B-1600-72 | 1600 | 34 | 72 | 12 |
| VBG1-4B-1600-96 | 1600 | 34 | 96 | 12 |
| VBG1-4B-1600-120 | 1600 | 34 | 120 | 12 |
| VBG1-4B-1600-144 | 1600 | 34 | 144 | 12 |
| VBG1-4B-2000-144 | 2000 | 34 | 144 | 12 |
| VBG1-4B-2500-144 | 2500 | 34 | 144 | 12 |

Features/Specifications

- Galvanized steel construction
- CSA Type 1 rated
- 600V, 4 bar
- Raised rear mounting holes
- Screw on covers with hand holds
- 800A and above minimum 50KA bus bracing
- PC101 (ANSI 61) Grey powder coat finish
- Type 3R and 4 available (consult factory)
- Line and load lugs available
- Custom sizes, material and colour available

Rev-1