



Advanced Technology. Simple Solutions.

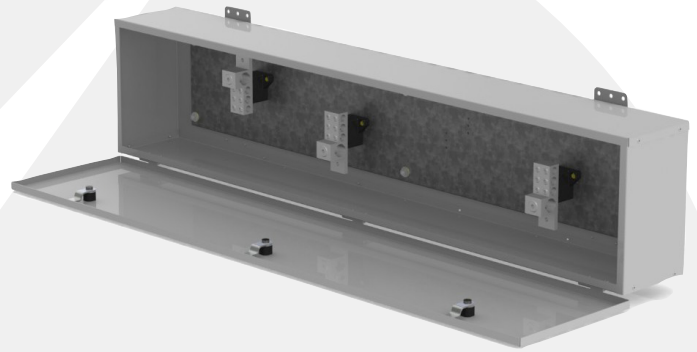
# WEATHERPROOF SPLITTER TROUGH (3-POLE)

## VS3R-3W

The VS3R-3W splitter trough is used in outdoor applications for protection from rain, sleet, and snow. The removable, hinged door provides easy access and additional safety by enabling the user to close the cover with one hand. These splitters are rated Type 3R, manufactured with galvanized steel for additional corrosion protection, and are finished with PC101 (ANSI 61) Grey powder coat paint.

### Features / Specifications

- Galvanized steel construction
- CSA Type 3R rated
- Pour-in-place gasket
- 600V maximum, 3-pole
- Cu / Al rated lugs
- Hinged lid with quarter-turn fasteners
- Mounting ears
- PC101 (ANSI 61) Grey powder coat finish
- Custom sizes, material, and colour available



PART NUMBER	AMPS	HEIGHT	WIDTH	DEPTH	MAIN LUG RATINGS	BRANCH LUG RATINGS
VS3R-3W-125-24	125	8 in	24 in	6 in	(1) 1/0-14	(6) 2-14
VS3R-3W-125-36	125	8 in	36 in	6 in	(1) 1/0-14	(6) 2-14
VS3R-3W-125-48	125	8 in	48 in	6 in	(1) 1/0-14	(6) 2-14
VS3R-3W-125-60	125	8 in	60 in	6 in	(1) 1/0-14	(6) 2-14
VS3R-3W-125-72	125	8 in	72 in	6 in	(1) 1/0-14	(6) 2-14
VS3R-3W-225-24	225	8 in	24 in	6 in	(1) 300-6	(6) 2/0-14
VS3R-3W-225-36	225	8 in	36 in	6 in	(1) 300-6	(6) 2/0-14
VS3R-3W-225-48	225	8 in	48 in	6 in	(1) 300-6	(6) 2/0-14
VS3R-3W-225-60	225	8 in	60 in	6 in	(1) 300-6	(6) 2/0-14
VS3R-3W-225-72	225	8 in	72 in	6 in	(1) 300-6	(6) 2/0-14
VS3R-3W-400-24	400	10 in	24 in	6 in	(1) 600-4 or (2) 250-1/0	(4) 4/0-6 and (2) 3/0-14
VS3R-3W-400-36	400	10 in	36 in	6 in	(1) 600-4 or (2) 250-1/0	(4) 4/0-6 and (2) 3/0-14
VS3R-3W-400-48	400	10 in	48 in	6 in	(1) 600-4 or (2) 250-1/0	(4) 4/0-6 and (2) 3/0-14
VS3R-3W-400-60	400	10 in	60 in	6 in	(1) 600-4 or (2) 250-1/0	(4) 4/0-6 and (2) 3/0-14
VS3R-3W-400-72	400	10 in	72 in	6 in	(1) 600-4 or (2) 250-1/0	(4) 4/0-6 and (2) 3/0-14
VS3R-3W-600-48	600	12 in	48 in	7 in	(2) 600-4 or (4) 250-1/0	(4) 4/0-6 and (2) 3/0-14
VS3R-3W-600-60	600	12 in	60 in	7 in	(2) 600-4 or (4) 250-1/0	(4) 4/0-6 and (2) 3/0-14
VS3R-3W-600-72	600	12 in	72 in	7 in	(2) 600-4 or (4) 250-1/0	(4) 4/0-6 and (2) 3/0-14