



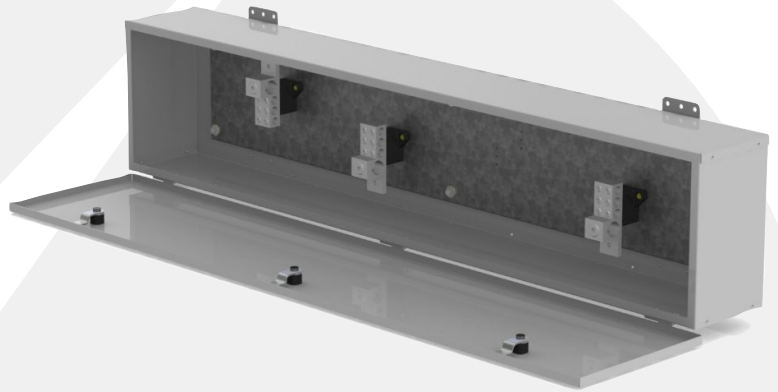
Advanced Technology. Simple Solutions.

TYPE 4 WEATHERPROOF SPLITTER TROUGH (3-POLE)

VS4-3W

Features / Specifications

- Steel construction
- CSA Type 4 rated
- Pour-in-place gasket
- 600V maximum, 3-pole
- Cu / Al rated lugs
- Hinged lid with quarter-turn fasteners
- Mounting ears
- PC101 (ANSI 61) Grey powder coat finish
- Custom sizes, material, and colour available



PART NUMBER	AMPS	HEIGHT	WIDTH	DEPTH	MAIN LUG RATINGS	BRANCH LUG RATINGS
VS4-3W-125-24	125	8 in	24 in	6 in	(1) 1/0-14	(6) 2-14
VS4-3W-125-36	125	8 in	36 in	6 in	(1) 1/0-14	(6) 2-14
VS4-3W-125-48	125	8 in	48 in	6 in	(1) 1/0-14	(6) 2-14
VS4-3W-125-60	125	8 in	60 in	6 in	(1) 1/0-14	(6) 2-14
VS4-3W-125-72	125	8 in	72 in	6 in	(1) 1/0-14	(6) 2-14
VS4-3W-225-24	225	8 in	24 in	6 in	(1) 300-6	(6) 2/0-14
VS4-3W-225-36	225	8 in	36 in	6 in	(1) 300-6	(6) 2/0-14
VS4-3W-225-48	225	8 in	48 in	6 in	(1) 300-6	(6) 2/0-14
VS4-3W-225-60	225	8 in	60 in	6 in	(1) 300-6	(6) 2/0-14
VS4-3W-225-72	225	8 in	72 in	6 in	(1) 300-6	(6) 2/0-14
VS4-3W-400-24	400	10 in	24 in	6 in	(1) 600-4 or (2) 250-1/0	(4) 4/0-6 and (2) 3/0-14
VS4-3W-400-36	400	10 in	36 in	6 in	(1) 600-4 or (2) 250-1/0	(4) 4/0-6 and (2) 3/0-14
VS4-3W-400-48	400	10 in	48 in	6 in	(1) 600-4 or (2) 250-1/0	(4) 4/0-6 and (2) 3/0-14
VS4-3W-400-60	400	10 in	60 in	6 in	(1) 600-4 or (2) 250-1/0	(4) 4/0-6 and (2) 3/0-14
VS4-3W-400-72	400	10 in	72 in	6 in	(1) 600-4 or (2) 250-1/0	(4) 4/0-6 and (2) 3/0-14
VS4-3W-600-48	600	12 in	48 in	7 in	(2) 600-4 or (4) 250-1/0	(4) 4/0-6 and (2) 3/0-14
VS4-3W-600-60	600	12 in	60 in	7 in	(2) 600-4 or (4) 250-1/0	(4) 4/0-6 and (2) 3/0-14
VS4-3W-600-72	600	12 in	72 in	7 in	(2) 600-4 or (4) 250-1/0	(4) 4/0-6 and (2) 3/0-14