

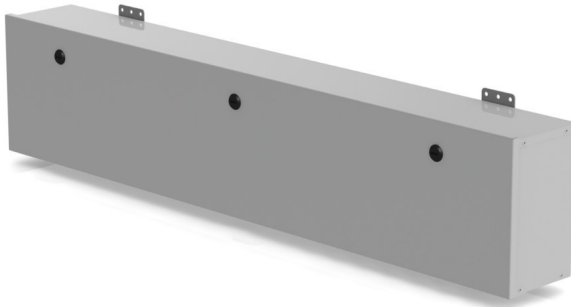


Advanced Technology. Simple Solutions.

WEATHERPROOF WIREWAYS

VWL

The VWL weatherproof wireway is used in outdoor applications for protection from rain, sleet and snow. The removable hinged door allows easy access and additional safety by enabling the user to close the cover with one hand. These wireways are rated Type 3R and manufactured with galvanized steel for additional corrosion protection and are finished with PC101 (ANSI 61) grey polyester powder coat paint.



Features/Specifications

- Galvanized steel construction
- CSA Type 3R rated
- Pour in place gasket
- Hinged lid with quarter turn fasteners
- Mounting ears
- PC101 (ANSI 61) Grey powder coat finish
- Custom sizes, material and colour available

PART NUMBER	HEIGHT (INCHES)	WIDTH (INCHES)	DEPTH (INCHES)
VWL2486	8	24	6
VWL3686	8	36	6
VWL4886	8	48	6
VWL6086	8	60	6
VWL7286	8	72	6
VWL24106	10	24	6
VWL36106	10	36	6
VWL48106	10	48	6
VWL60106	10	60	6
VWL72106	10	72	6

Rev-1.1